



Staveley Gardens, London, W4 2SF

Guide Price £599,950

WHITMAN & CO.

SALES · LETTINGS · COMMERCIAL

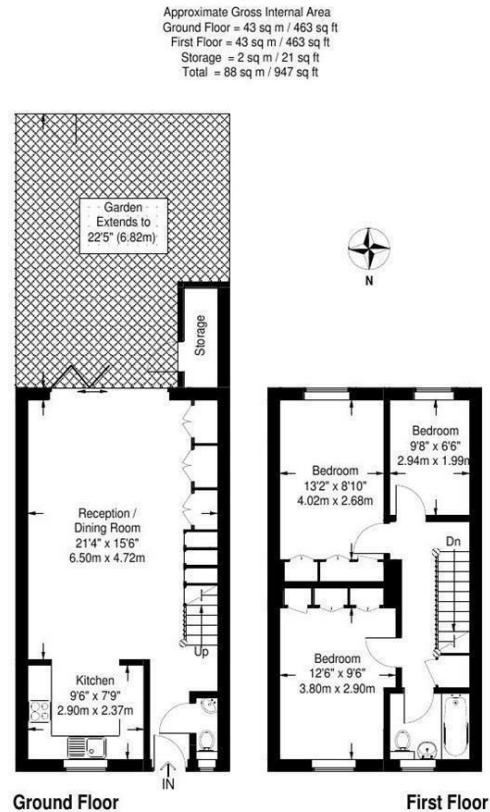
- Great Grove park Location near Dukes meadows
- Very nicely presented family house
- Fitted modern kitchen
- Good for transport links
- Open plan living area with bifold doors
- No onward chain

Tenure - Freehold
Local Authority - Hounslow
Council Tax - Band E

THE PROPERTY

An immaculately presented three-bedroom house offering an excellent balance of living and entertaining space in this quiet cul de sac close to The River and the open fields of Dukes Meadows. The accommodation comprises three bedrooms, family bathroom, loft storage, a 29' open plan reception room with bi-fold doors onto the private landscaped garden, fully integrated kitchen, Cloakroom, Extensive built-in storage, integrated office unit, and off-street parking. Situated within close proximity of Chiswick (mainline) Station, numerous bus routes, and The Riverside Club. No onward chain.

Staveley Gardens, Chiswick W4 2SF



Measured in accordance with RICS guidelines. To be used for identification and guidance purposes only. Not to scale.
© Photos Plans and EPCs | Tel: 07774 688 771 | info@photosplansandepcs.com | www.photosplansandepcs.com (ID 61836)

SITUATION



5-7 Turnham Green Terrace, Chiswick, London, W4 1RG

Tel 020 8747 8800

E-mail sales@whitmanandco.com

Website www.whitmanandco.com



MISREPRESENTATION ACT 1967

Whitman & Co. for themselves and for the vendors give notice that these particulars do not constitute any part of, an offer of contract. All statements contained in these particulars are made without responsibility on the part of Whitman & Co. or the vendor. None of the statements contained in these particulars is to be relied upon as statements or representations of facts. Any intending purchaser must satisfy himself by inspection or otherwise as to the correctness of each of the statements contained in these particulars. The vendor does not make or give, and neither Whitman & Co. or any person in their employment has any authority to make or give, any representation or warranty whatever in relation to the property.